

2024



HANGZHOU HENGNIE MACHINERY CO.,LTD  
杭州恒涅机械有限公司

齿轮箱应用：搅拌机 etc  
GEARBOX APPLICATIONS: MIXERS, ETC



WWW.NORDGEAR.CN



SGS



ISO




搅拌机齿轮箱是搅拌机的重要组成部分，主要用于传动搅拌机的搅拌部件，如搅拌刀或搅拌棒。齿轮箱通常由齿轮、轴承、轴和外壳等部件组成，通过齿轮的传动来实现搅拌机的搅拌功能。

搅拌机齿轮箱的设计和制造需要考虑到搅拌机的工作环境和工作要求，确保其具有足够的强度和耐久性。同时，齿轮箱的润滑和维护也是非常重要的，可以有效延长搅拌机的使用寿命。

在使用搅拌机齿轮箱时，需要定期检查和维修，确保其正常运转。如果发现异常情况，如异响或温度过高等，应及时停机检修，以免造成更严重的故障

应用场所:立式单蛟龙TMR饲料搅拌机；小马力立式搅拌机；卧式TMR饲料搅拌机；1-1.5, 2-3m<sup>3</sup>混凝土搅拌机等等



Aluminum shell gearbox is a kind of gearbox made of aluminum alloy material, which has the characteristics of light weight, corrosion resistance and good heat dissipation. Aluminum shell gearboxes are usually used in industrial machinery and equipment, automobiles, ships and other fields for transmission and speed shifting. The main components of the aluminum shell gearbox include gears, bearings, shafts, etc., which transmit power through the meshing of gears to realize the operation of mechanical equipment.

Aluminum shell gearbox has the advantages of simple structure, convenient maintenance and high transmission efficiency, and is widely used in various industrial fields. At the same time, the aluminum shell gearbox also has good wear resistance and stable working performance, and can run stably for a long time. When choosing an aluminum shell gearbox, it is necessary to select the appropriate model and specification according to the specific use requirements and working environment to ensure the normal operation and service life of the equipment.















搅拌机类齿轮箱目录导航

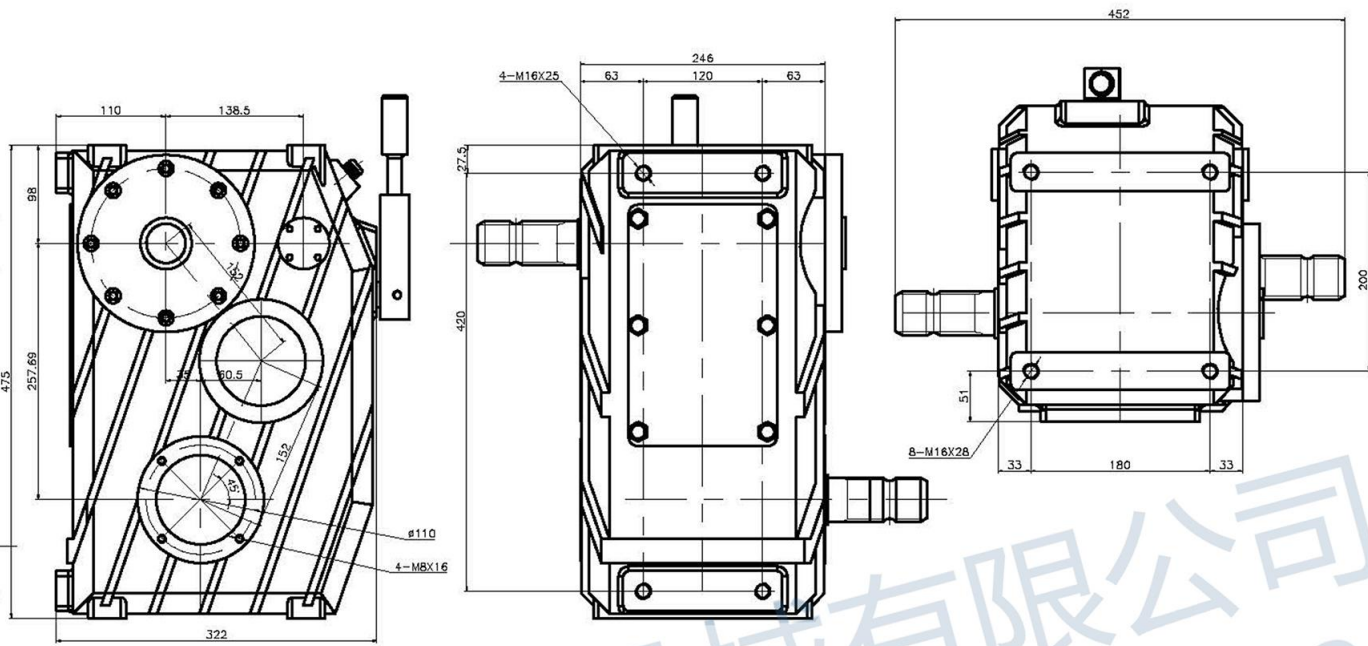
平行轴类齿轮箱目录导航





速比 Ratio	输入转 速 Input Speed	功率 Horse Power (Hp) (Kw)		扭矩 Torque(N · m) Input Output		输出转速 Output (RPM)	净重约 N.W.	链接 Link	
<b>P152</b> 带拨叉可变速 Available fork shifting									
	1:1-1.5:1	540	125	92.0	1627	1627-2440	360-540	104Kg	
	1:1-1.8:1	540	125	92.0	1627	1627-2928	300-540		
	1:1-1.8:1	540	125	92.0	1627	1627-2928	300-540		
<b>P153</b> 带拨叉可变速 Available fork shifting									
	1:1-1.3:1	540	180	132.0	2334	2334-3034	415-540	127Kg	
	1:1-1.5:1	540	180	132.0	2334	2334-3501	360-540		
	1:1-1.5:1	1000	245	180.0	1719	1719-2578	666.7-1000		
	1:1-1.8:1	540	180	132.0	2334	2334-4202	300-540		
	1:1-1.8:1	1000	245	180.0	1719	1719-3094	556-1000		
<b>P154</b>									
	1:1	540	100	73.5	1299.9	1299.9	540	66Kg	
	1.94:1	540	80	58.8	1039.9	2017.4	1047.6		
<b>PL413</b> 带拨叉可变速 Available fork shifting									
	13.18:1-8.41:1	540	90	66.2	4410	9870-15373	41-64.3	150Kg	
<b>PL771</b>									
	19.4:1	540	33.3	24.5	433	8397	27.8	247Kg	
<b>PL772</b>									
	16.13:1	540	75	55.1	975	15725	33.5	265Kg	
	21.1:1	540	44	32.3	572	12068	25.6		



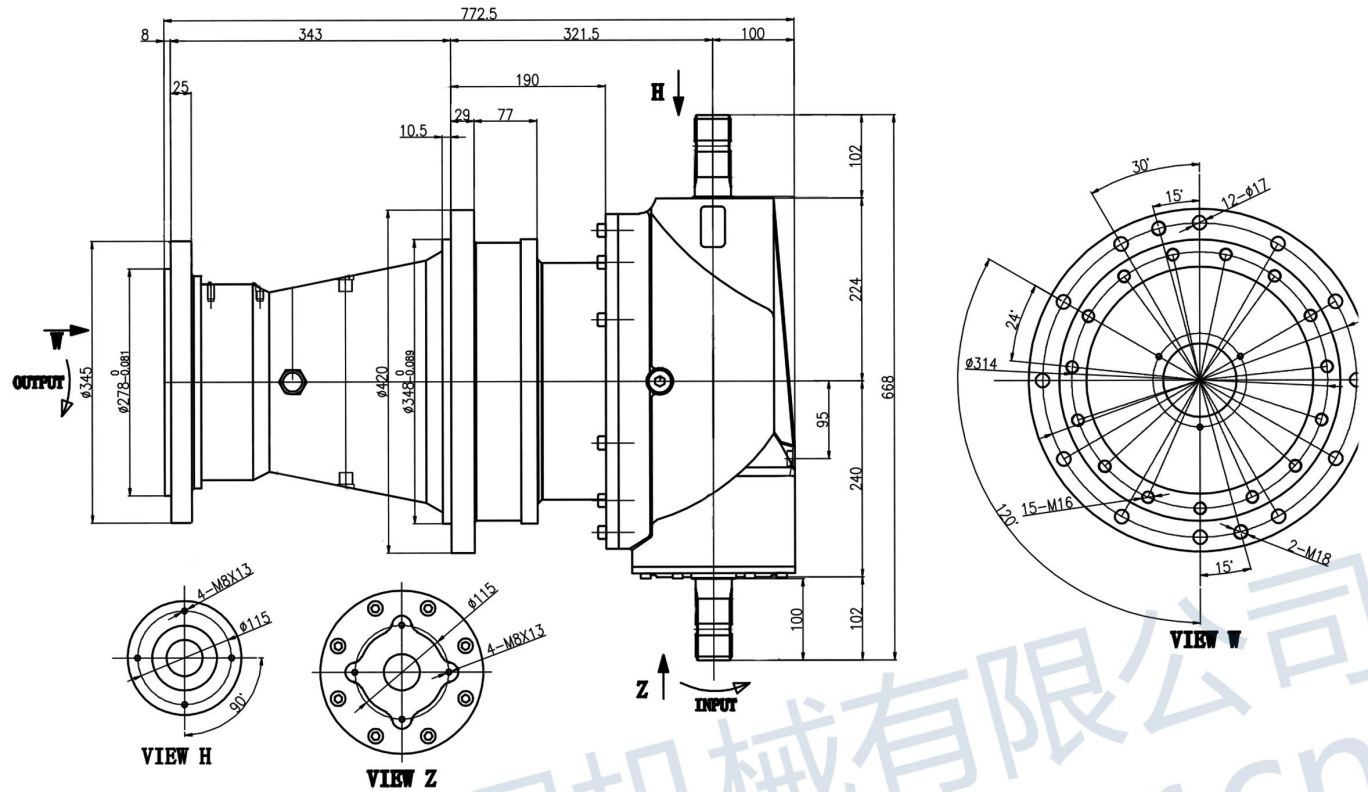


S.No.	Ratio	INPUT				OUTPUT	
		RPM	Kw	Hp	TORQUE N·m	TORQUE N·m	RPM
Speed	1:1	540	92	125	1627	1267	540
Multiplier	1.5:1	540	92	125	1627	2440	360

LUBRICATING OIL: SAE.90EP



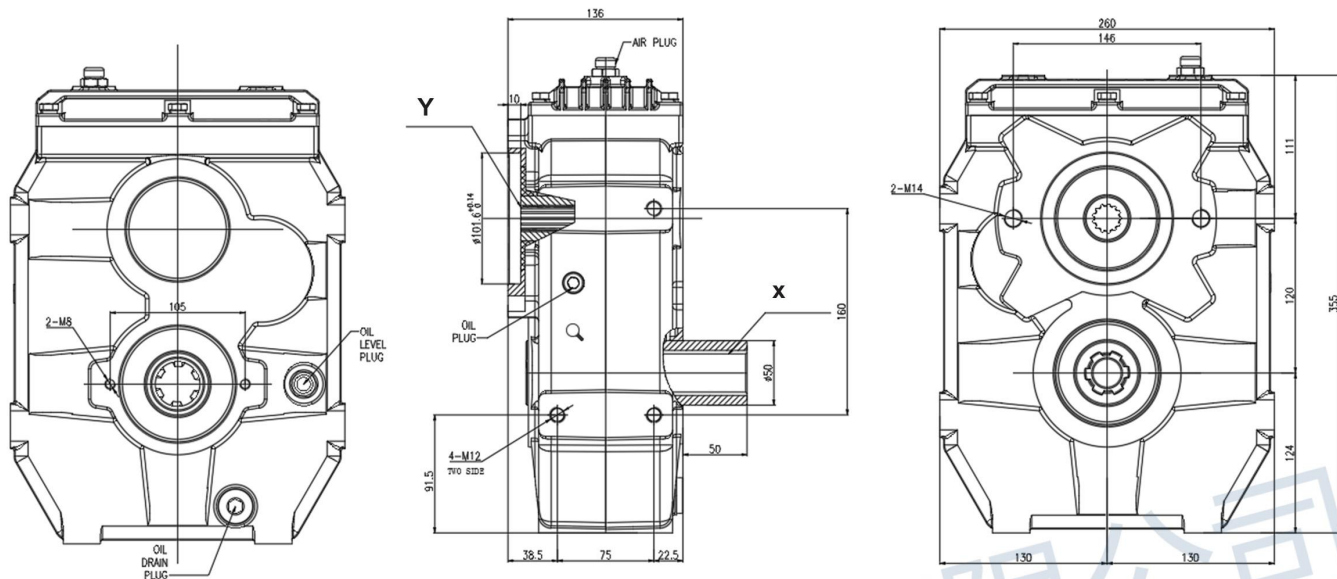




S.No.	Ratio	INPUT				OUTPUT	
		RPM	Hp	Kw	Torque N·m	Torque N·m	RPM
Speed Reducer	13.4:1	540	95	69.8	1234.9	16500	40.3
	15.1:1	540	87	63.9	1132.4	17100	35.76
	16.13:1	540	75	55.1	973.3	15700	33.5
	18.2:1	540	57	41.9	741.7	13500	29.67
	21.1:1	540	44	32.3	569.2	12010	25.6

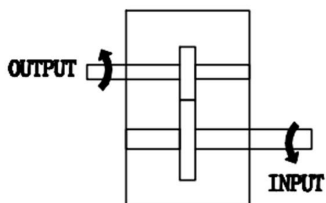
LUBRICATING OIL: SAE.90EP



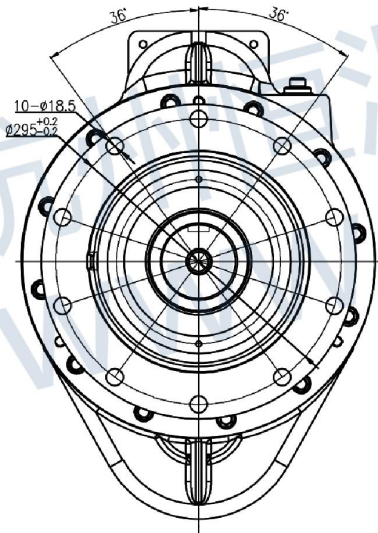
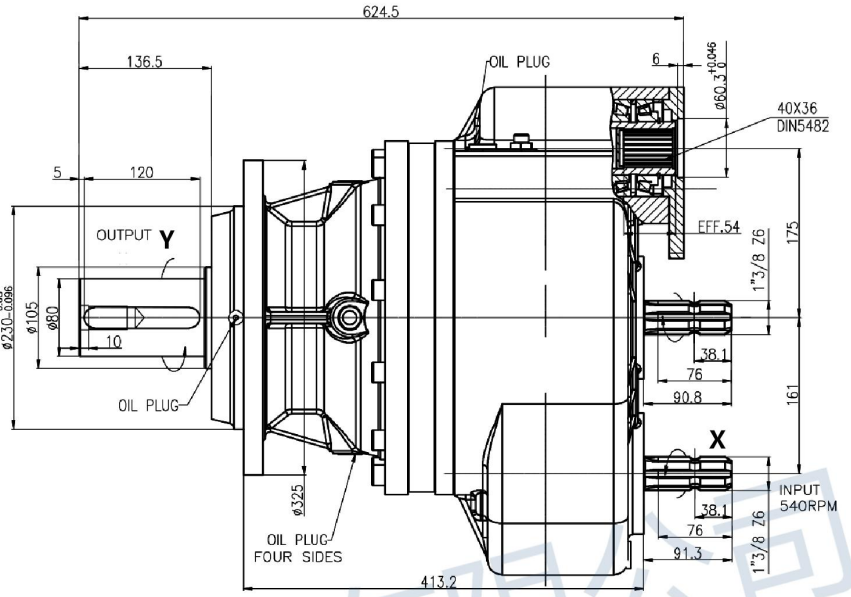
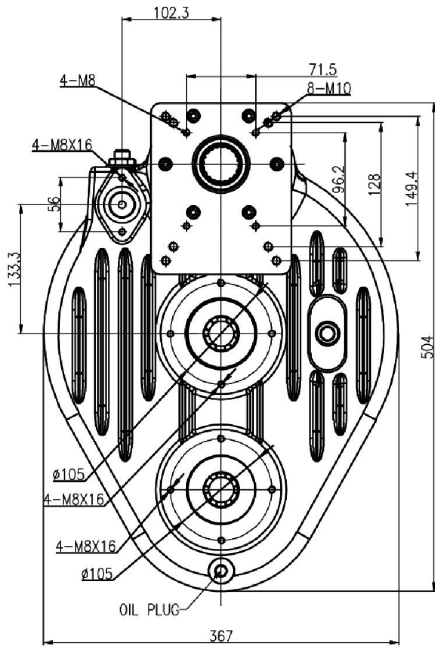


S.No.	Ratio	INPUT				OUTPUT			SHAFTS
		RPM	Hp	Kw	Torque N·m	Torque N·m	RPM	INPUT	
Speed Multiplier	1:2.62	540	75	55	972.8	371.5	1414	X	
	1:4	540	75	55	972.8	243.2	2160	X	

LUBRICATING OIL:







S.No.	Ratio1-Ratio2	INPUT(X)				OUTPUT(Y)			
		RPM	Hp	Kw	Torque N·m	Ratio1 ---		Ratio2	
						Torque N·m	RPM	Torque N·m	RPM
PL413	13.18:1-8.41:1	540	90	66	1169.9	15408.1	41	9870.8	64



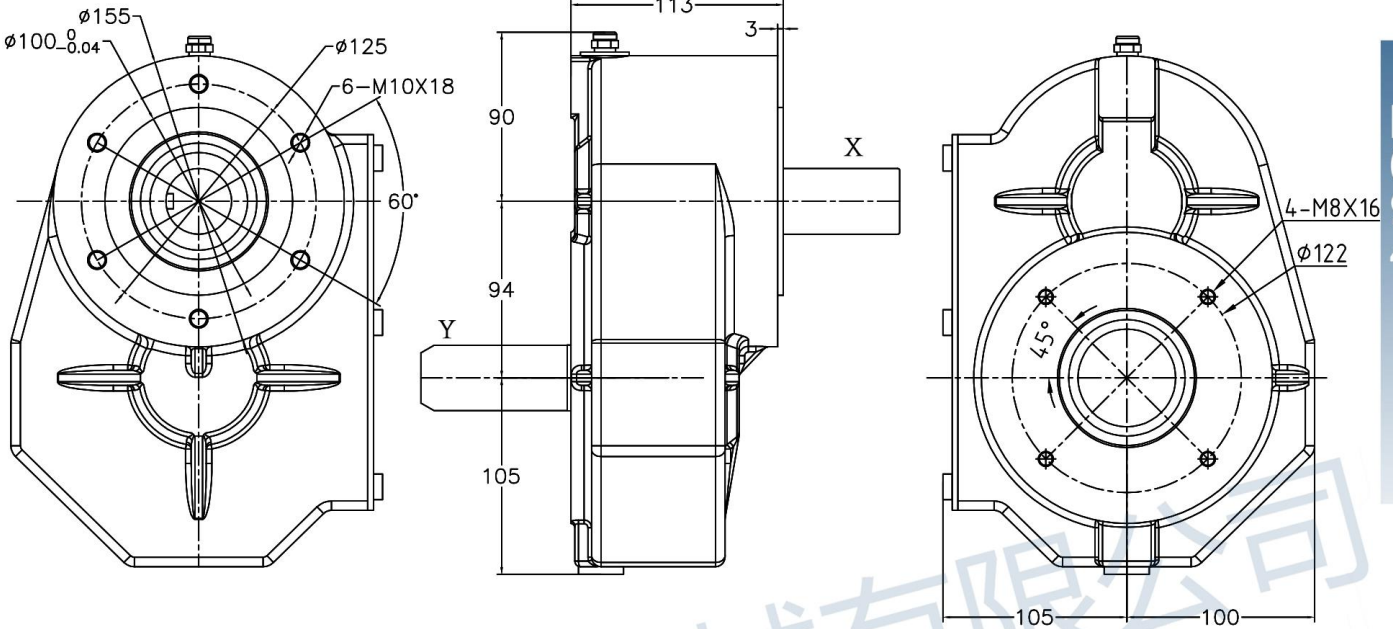


	速比 Ratio	输入转速 Input Speed (RPM)	功率 Horse Power (Hp) (Kw)		扭矩 Torque(N · m) Input Output		输出转速 Output (RPM)	净重约 N.W.	链接 Link
<b>P038</b>									
	1:1.88	540	120	88.2	1560	830	1015	38Kg	
	1.88:1	540	105	77.2	1365	2566	287		
<b>P80</b>									
	7.73:1	540	28	20.6	364	2816	70	29Kg	
<b>P86</b>									
	1:3.6	540	28	20.6	364	101	1944	24.5Kg	
	1:4.5	540	30	22.0	389	86	2430		
<b>P094</b>									
	1:1	540	30	22.1	390	390	540	17Kg	
	1:2	540	35	25.7	455	227	1080		
	1:3	540	35	25.7	455	152	1620		
	1:5	540	35	25.7	455	91	2700		
	1:7	540	35	25.7	455	65	3780		
<b>P105</b>									
	2.5:1	540	24	17.6	312	780	216	23kg	
	1.9:1	540	36	26.5	477	895	284		
	1:1	540	70	51.5	926	926	1026		
	1:2.5	540	60	44.1	795	315	1350		
	1:3	540	60	44.1	795	261	1620		
<b>P120</b>									
	1:2.62	540	75	55.1	975	372	1415	33Kg	
	1:4	540	75	55.1	975	244	2160		
<b>P130</b>									
	2:1	2000	108	79.4	379	758	1000	38Kg	
	1:1	540	85	62.5	1105	1105	540		
	1:2	1000	135	99.2	948	474	2000		
	1:3.4	540	85	62.5	1105	325	1836		
	1:4	540	85	62.5	1105	276	2160		
	1:5	540	85	62.5	1105	221	2700		
	1:6	540	85	62.5	1105	184	3240		

### Others:

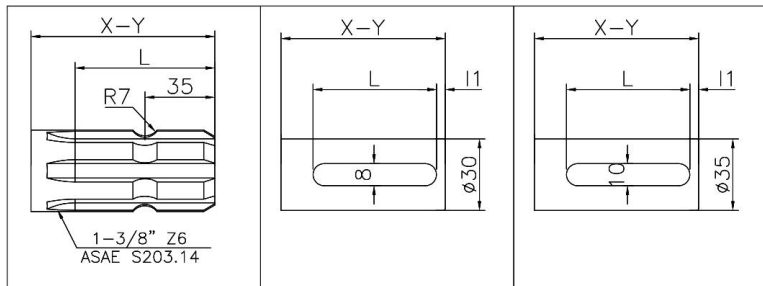
平行轴齿轮箱是一种常见的齿轮传动装置，用于传递动力和转速，通常用于平行轴之间的传动。平行轴齿轮箱由两个或多个平行轴上的齿轮组成，通过齿轮之间的啮合传递动力，实现不同轴之间的传动

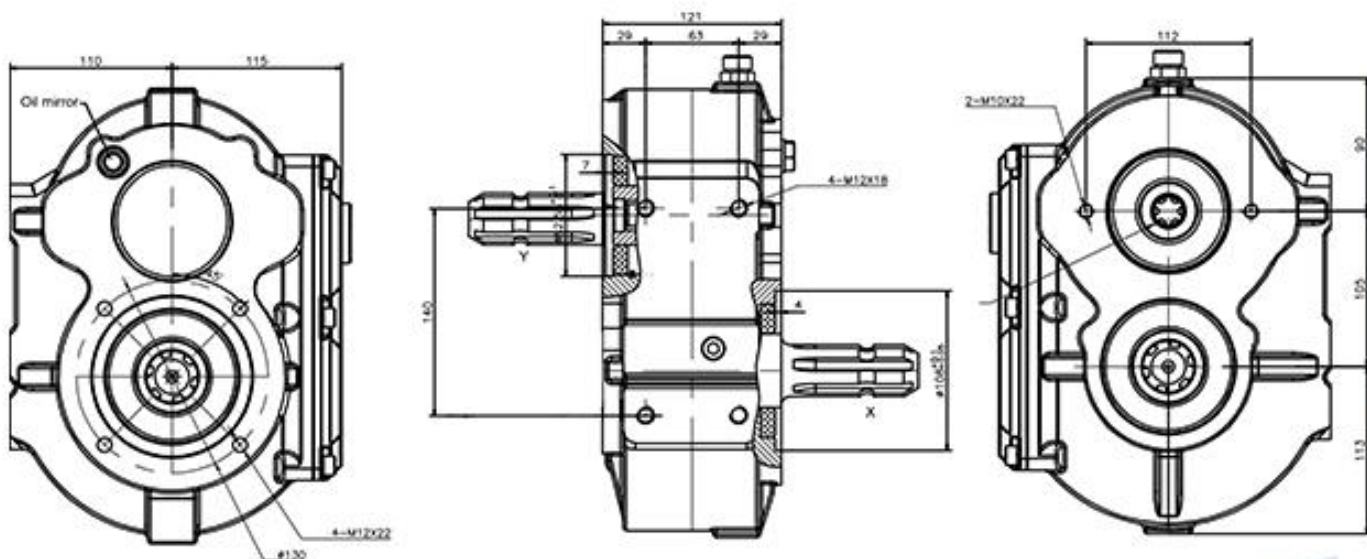
A parallel shaft gearbox is a common gear transmission device used to transmit power and speed, and is usually used for transmission between parallel shafts. The parallel shaft gearbox consists of two or more gears on parallel shafts, which transmit power through the meshing between the gears to achieve transmission between different shafts



S.No.	Ratio	INPUT(X)				OUTPUT(Y)		SHAFTS
		RPM	Hp	Kw	TORQUE N·m	TORQUE N·m	RPM	
01	1:1	540	30	22	390	397	540	X-Y
02	1:2	540	35	25.7	455	227	1080	X
03	1:3	540	35	25.7	455	152	1620	X
04	1:3.5	540	35	25.7	455	130	1890	X
05	1:5	540	35	25.7	455	91	2700	X
06	1:6.2	540	35	25.7	455	74	3348	X
07	1:7	540	35	25.7	455	65	3780	X
08	1:8	540	35	25.7	455	57	4320	X
09	2:1	540	19	14.0	247	497	270	Y
10	3:1	540	12	8.8	156	471	180	Y
11	3.5:1	540	10	7.4	130	456	154	Y
12	5:1	540	8	5.9	104	523	108	Y
13	6.2:1	540	7	5	91	568	87	Y
14	7:1	540	6	4.4	78	550	77	Y
15	8:1	540	5	3.7	65	523	67.5	Y

LUBRICATING OIL: SAE.90EP

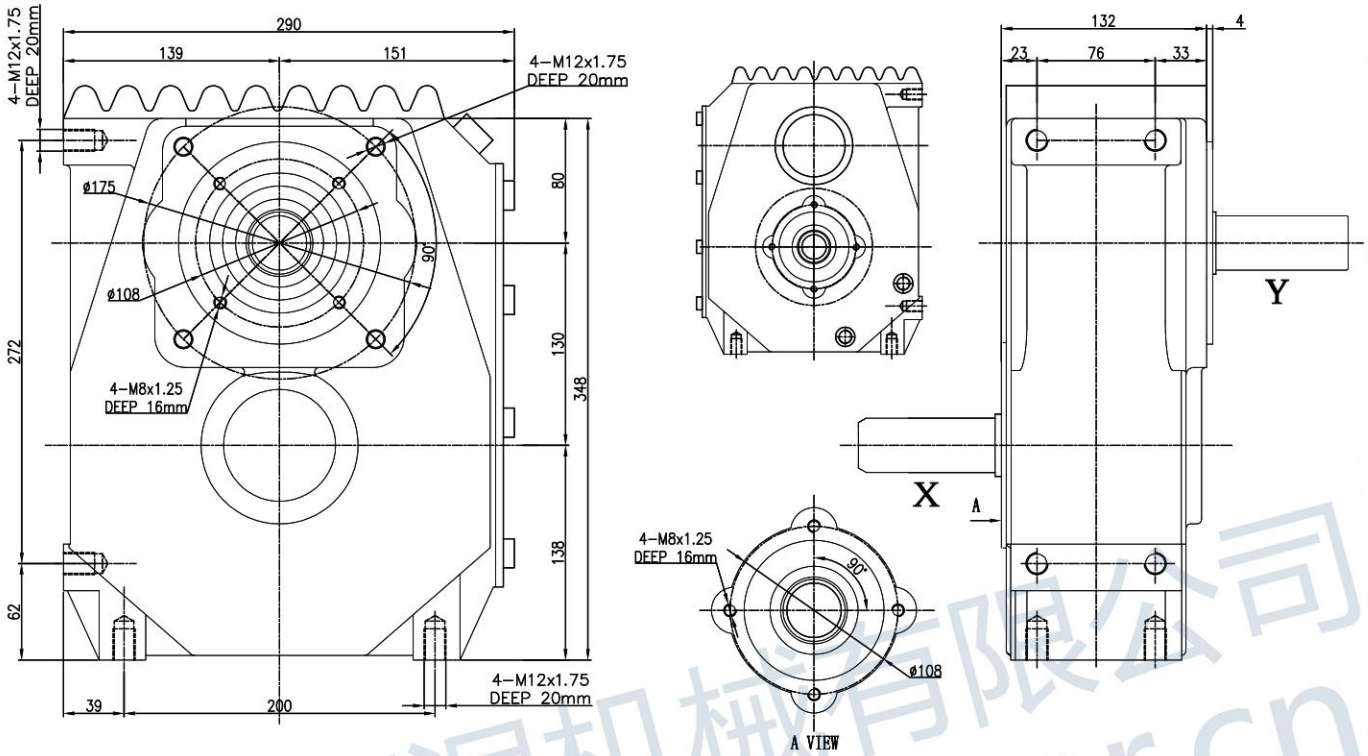




S.No.	Ratio	INPUT				OUTPUT		SHAFTS
		RPM	Hp	Kw	Torque N·m	Torque N·m	RPM	INPUT
01	1:1	540	70.0	51.5	926	926	540	Y-X
02	1.9:1	540	36.0	26.5	477	895	284	Y
03	2.5:1	540	24.0	17.6	318	785	216	Y
04	3:1	540	20.0	14.7	265	785	180	Y
05	3.57:1	540	15.0	11	199	701	151	Y
06	4:1	540	15.0	11	199	785	135	Y
07	7:1	540	10.0	7.4	130	975	77	Y
08	1:1.9	540	70.0	51.5	9288	482	1026	X
09	1:2.5	540	60.0	44	795	314	1350	X
10	1:3	540	60.0	44	795	261	1620	X
11	1:3.5	540	60.0	44	795	220	1927	X
12	1:4	540	60.0	44	795	196	2160	X
13	1:5	540	60.0	44	795	153	2700	X
14	1:7	540	60.0	44	795	111	3780	X

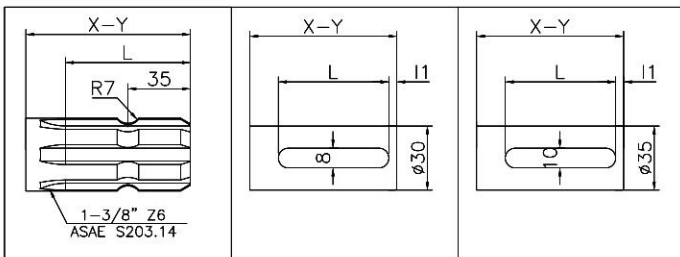
LUBRICATING OIL:SAE.90EP

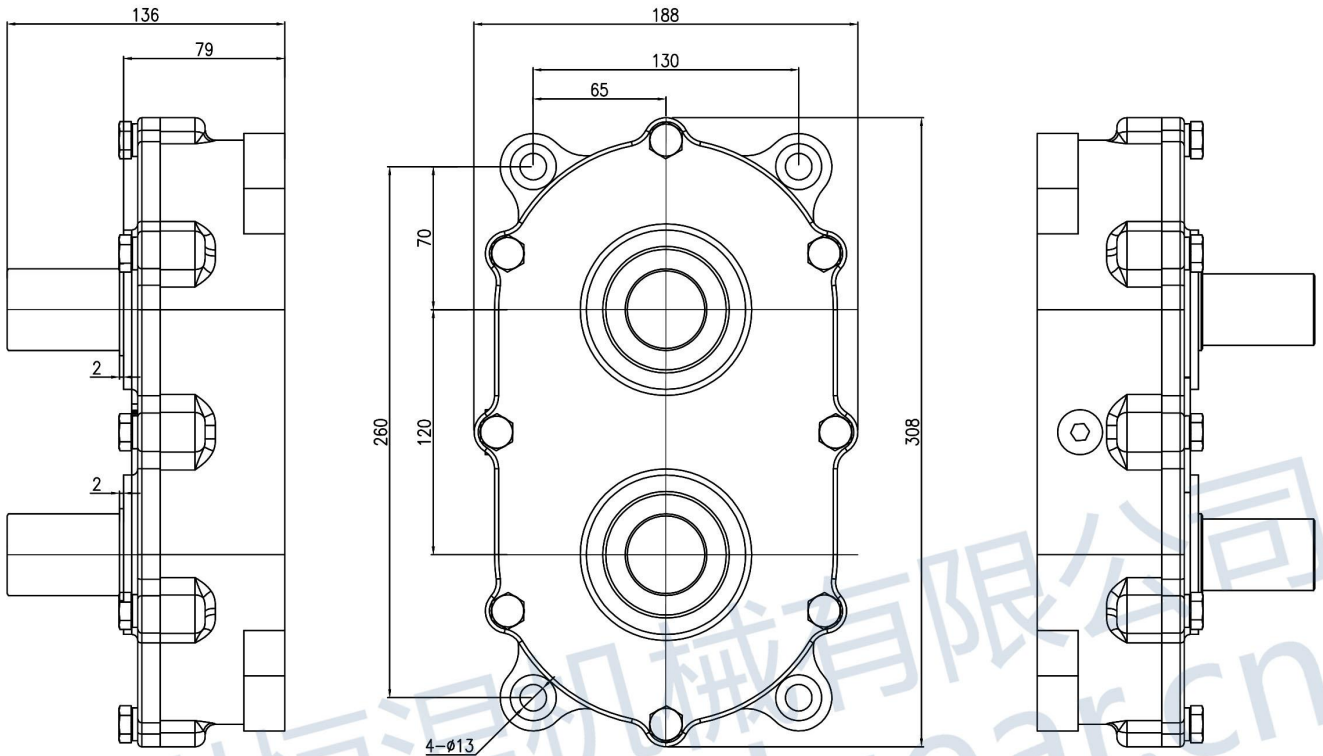




S.No.	Ratio	INPUT				OUTPUT		SHAFTS INPUT
		RPM	Hp	Kw	Torque	Torque	RPM	
01	1:1	540	85	62.5	1105	1112	540	X
02	1:1.48	540	90	66.2	1170	796	799	X
03	1:2	540	90	66.2	1170	589	1080	X
04	1:2.5	540	85	62.5	1105	445	1350	X
05	1:3	540	85	62.5	1105	370	1620	X
06	1:3.8	540	85	62.5	1105	292	2052	X
08	1:6	540	80	58.8	1040	174	3240	X
09	1:7	540	65	47.8	845	121	3780	X
10	1:1	540	85	62.5	1105	1112	540	Y
11	1.48:1	540	60	44.1	780	1162	365	Y
12	2:1	540	48	35.3	624	1256	270	Y
13	2.5:1	540	35	25.7	455	1145	216	Y
14	3:1	540	30	22.1	390	1178	180	Y
15	3.8:1	540	23	16.9	299	1144	142	Y
16	5:1	540	18	13.2	234	1178	108	Y
17	6:1	540	14	10.3	182	1100	90	Y
18	7:1	540	12	8.8	156	1100	77	Y

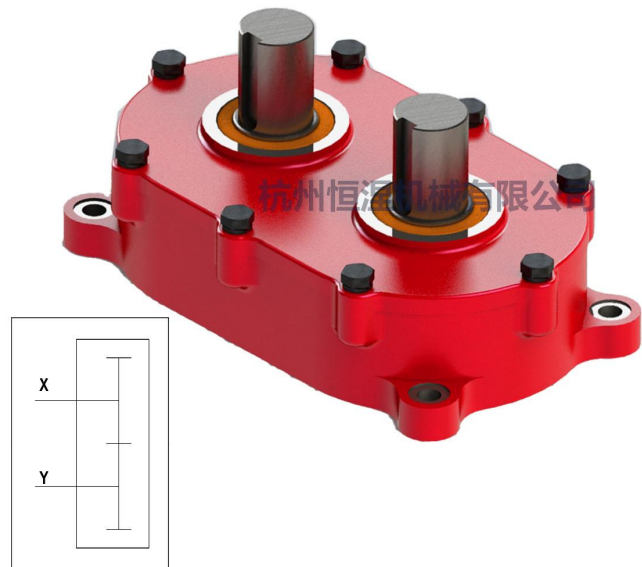
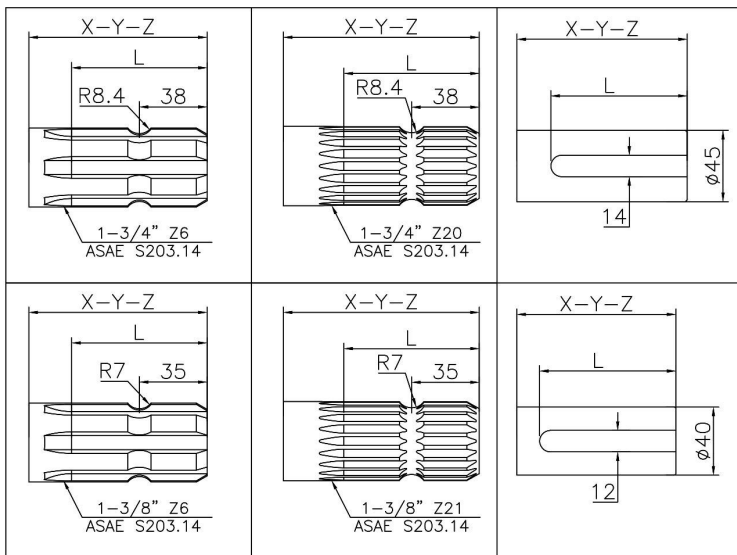
LUBRICATING OIL: SAE.90EP

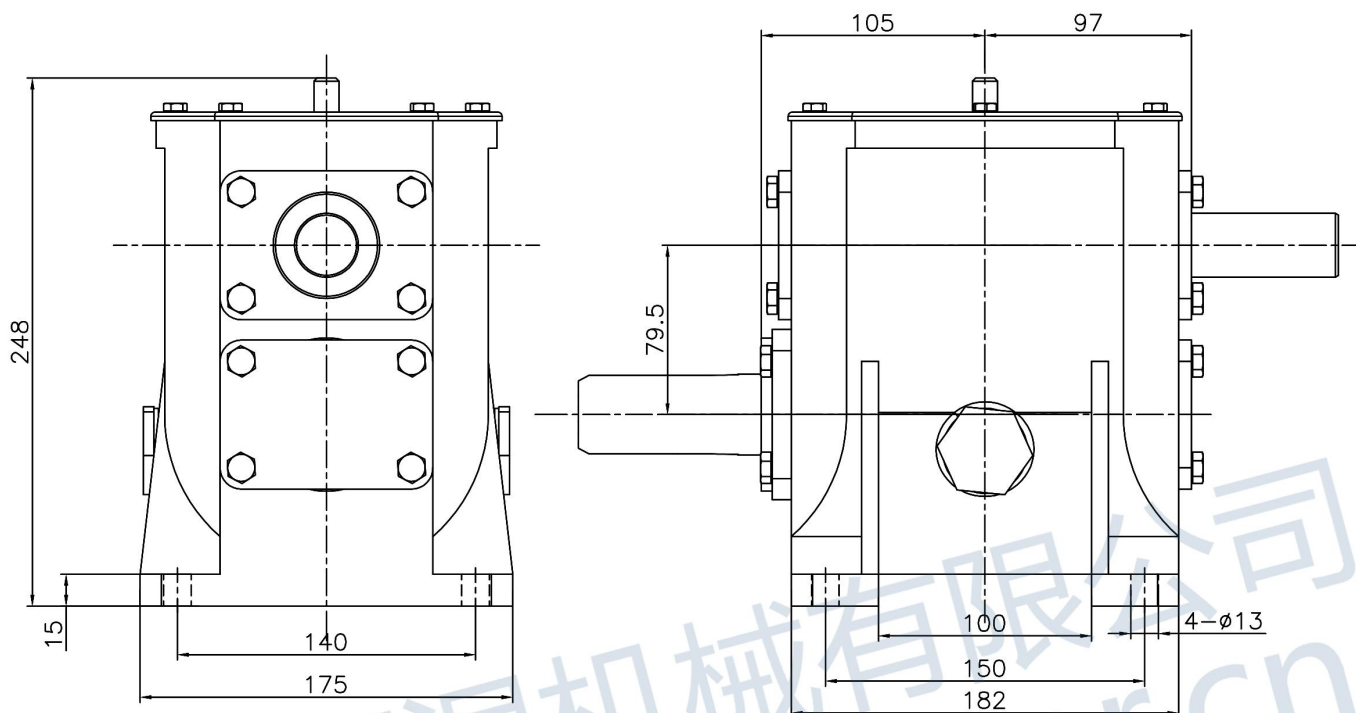




S. No.	RATIO	INPUT				OUTPUT	
		RPM	HP	KW	TORQUE N·m	TORQUE N·m	RPM
	1:1	540	45	33	584	584	540
	1:1	1000	82	60	573	573	1000

**LUBRICATING OIL: SAE.90EP**





	RATIO	Input				Output	
		RPM	HP	Kw	Torque N·m	Torque N·m	RPM
Speed Reducer	1.524:1	540	61.2	45	795.8	1213	354
LUBRICATING OIL:SAE.90EP					FREE WHEEL		

